

LIGHTING FIXTURE SCHEDULE								
SYMBOL	TYPE	DESCRIPTION	MANUFACTURER	MODEL NUMBER	OPTICAL ELEMENT	MOUNTING	VOLTS	LIGHT SOURCE
	AE	2'x4' DIRECT/INDIRECT L.E.D. TROFFER WITH FLANGE MOUNT FOR HARD CEILING AND A 90 MINUTE BATTERY BACKUP SYSTEM.	CREE	ZR24-40L-40K-10V-EB14-DGA-24WHT with 10-YEAR WARRANTY ON L.E.D. ARRAYS AND DRIVER.	DIRECT/INDIRECT w/CENTER BASKET	CEILING FLANGE RECESSED	120/277V UNIVERS.	L.E.D. - 4000 lumens, 4000K
	B	2'x4' DIRECT/INDIRECT L.E.D. GRID TROFFER.	CREE	ZR24-40L-40K-10V with 10-YEAR WARRANTY ON L.E.D. ARRAYS AND DRIVER.	DIRECT/INDIRECT w/CENTER BASKET	CEILING GRID RECESSED	120/277V UNIVERS.	L.E.D. - 4000 lumens, 4000K
	BE	2'x4' DIRECT/INDIRECT L.E.D. GRID TROFFER AND A 90 MINUTE BATTERY BACKUP SYSTEM.	CREE	ZR24-40L-40K-10V-EB14 with 10-YEAR WARRANTY ON L.E.D. ARRAYS AND DRIVER.	DIRECT/INDIRECT w/CENTER BASKET	CEILING GRID RECESSED	120/277V UNIVERS.	L.E.D. - 4000 lumens, 4000K
	C	4' L.E.D. VANITY WALL BRACKET FIXTURE, SEMI-CIRCULAR, PEARL ENDCAPS WITH CHROME TRIM.	BROWNLEE	5029-49-E37LED-CH-WA-40K with 5-YEAR WARRANTY ON L.E.D. ARRAYS AND DRIVER.	WHITE ACRYLIC	WALL MOUNT ABOVE VANITY	120/277V UNIVERS.	L.E.D. - 4200 lumens, 4000K
	D	10" L.E.D. RECESSED DOWNLIGHT WITH DAMP LOCATION LISTING.	LUMENOPTIX	LRD3-10-60-9340-W-RM-FW with 5-YEAR WARRANTY ON L.E.D. ARRAYS AND DRIVER.	CLEAR SEMI SPECILAR	CEILING RECESSED	120/277V UNIVERS.	L.E.D. - 6000 lumens, 4000k
	DE	10" L.E.D. RECESSED DOWNLIGHT WITH COLD-WEATHER RATED 90-MINUTE BATTERY PACK AND A DAMP LOCATION LISTING.	LUMENOPTIX	LRD3-10-60-9340-W-RM-FW-EB01 with 5-YEAR WARRANTY ON L.E.D. ARRAYS AND DRIVER.	CLEAR SEMI SPECULAR	CEILING RECESSED	120/277V UNIVERS.	L.E.D. - 6000 lumens, 4000k
	FE	EXTERIOR L.E.D WALL FIXTURE WITH A COLD-WEATHER 90-MINUTE BATTERY PACK AND A PHOTOCELL.	ACCULITE	LW-B06-4K-UN-WT-PC-EM with 5-YEAR WARRANTY ON L.E.D. ARRAYS AND DRIVER.	WIDE THROW OPTICS	WALL SURFACE	120/277V UNIVERS.	L.E.D. - 5900 lumens, 4000K
	-	EDGE-LIT L.E.D. EXIT SIGN, SINGLE FACE, UNIVERSAL MOUNTING WITH A 90 MINUTE BATTERY BACKUP SYSTEM.	EMERGI-LITE	TA-PEN-1-RC with 5-YEAR WARRANTY ON L.E.D. ARRAYS AND DRIVER.	EDGE-LIT ACRYLIC PANEL	CEILING OR WALL MOUNT	120/277V UNIVERS.	L.E.D.
	-	EDGE-LIT L.E.D. EXIT SIGN, DOUBLE FACE, UNIVERSAL MOUNTING WITH A 90 MINUTE BATTERY BACKUP SYSTEM.	EMERGI-LITE	TA-PEN-2-RC with 5-YEAR WARRANTY ON L.E.D. ARRAYS AND DRIVER.	EDGE-LIT ACRYLIC PANEL	WALL MOUNT	120/277V UNIVERS.	L.E.D.

GENERAL CONSTRUCTION NOTES

1. PROVIDE ALL WORK IN ACCORDANCE WITH THE FOLLOWING CODES AND STANDARDS:

INTERNATIONAL BUILDING CODE2012 EDITION
NFPA 70 - NATIONAL ELECTRICAL CODE2011 EDITION
2. PROVIDE RACEWAY AND WIRING TO NEW LIGHTING FIXTURES AND EXIT SIGNS IN LOCATIONS WHERE AN EXISTING FIXTURE OR SIGN DOES NOT CURRENTLY EXIST. PROVIDE ALL WORK IN ACCORDANCE WITH THE 2011 EDITION OF THE NATIONAL ELECTRICAL CODE. CONTRACTOR MAY RE-USE EXISTING RACEWAYS AND WIRING WHERE PRACTICAL.
3. ALL CONDUIT PENETRATIONS THROUGH WALLS AND CEILINGS SHALL BE 2-HOUR FIRESTOPPED - HILTI OR EQUAL.
4. RACEWAYS SHALL BE 3/4" EMT WITH COMPRESSION TYPE FITTINGS UNLESS NOTED OR DETAILED OTHERWISE. PROVIDE FIXTURE WHIPS THAT COMPLY WITH THE NATIONAL ELECTRICAL CODE.
5. JUNCTION BOXES SHALL BE STEEL TYPE WITH SCREW COVER, SIZED AND SUPPORTED IN ACCORDANCE WITH THE NATIONAL ELECTRICAL CODE. PROVIDE JUNCTION BOXES AS REQUIRED FOR POWER WIRING ADDITIONS AND RENOVATIONS.
6. INSTALL ELECTRICAL SYSTEMS WITHOUT INTERFERING WITH DUCTS, PIPES, STRUCTURAL MEMBERS, OR OTHER SYSTEMS.
7. PROVIDE SEISMIC WIRE SUPPORTS FOR ALL NEW LIGHTING FIXTURES AND EXIT SIGNS IN LOCATIONS WHERE AN EXISTING FIXTURE OR SIGN DOES NOT CURRENTLY EXIST. TROFFER FIXTURES SHALL BE SUPPORTED WITH TWO WIRES. EXIT SIGNS SHALL BE SUPPORTED WITH ONE WIRE. RECONNECT EXISTING WIRE SUPPORTS TO NEW FIXTURES AND SIGNS WHERE APPLICABLE.
8. THOROUGHLY CLEAN ALL EQUIPMENT AND SYSTEMS BEFORE PLACING IN OPERATION. RESTORE FINISHED SURFACES IF DAMAGED AND DELIVER THE ENTIRE INSTALLATION IN AN APPROVED CONDITION. THE CONTRACTOR SHALL INSTRUCT THE OWNER'S PERSONNEL IN THE PROPER OPERATION AND MAINTENANCE OF ALL FIXTURES AND SYSTEMS. FURNISH 3 SETS OF OPERATION AND MAINTENANCE MANUALS TO THE OWNER FOR THE INSTALLED LIGHTING SYSTEM.
9. THE CONTRACTOR SHALL GUARANTEE THE WORK INSTALLED UNDER THIS CONTRACT FOR A PERIOD OF ONE YEAR AFTER DATE OF FINAL ACCEPTANCE. DEFECTS WHICH APPEAR AS A RESULT OF NORMAL USAGE SHALL BE REMEDIED BY THE CONTRACTOR TO THE COMPLETE SATISFACTION OF THE OWNER WITHOUT COST TO THE OWNER. SEE SPECIAL LIGHTING WARRANTY REQUIREMENTS IN LIGHTING FIXTURE SCHEDULE.
10. ALL FIXTURES AND ELECTRICAL MATERIALS SHALL BE U.L. TESTED & LISTED OR BE TESTED & LISTED BY A NATIONALLY RECOGNIZED TESTING LABORATORY.
11. CUTTING, DRILLING, AND PATCHING: PROVIDE CHASES, SLOTS, AND OPENINGS IN EXISTING BUILDING COMPONENTS TO ALLOW FOR ELECTRICAL INSTALLATIONS. PERFORM CUTTING, DRILLING, FITTING, AND PATCHING REQUIRED TO:

A) INSTALL EQUIPMENT, MATERIALS, AND RACEWAYS IN EXISTING STRUCTURES.
B) REMOVE AND REPLACE DEFECTIVE WORK THAT DOES NOT CONFORM TO REQUIREMENTS OF THE CONTRACT DOCUMENTS.
C) UPON WRITTEN INSTRUCTIONS FROM THE ARCHITECT/ENGINEER, UNCOVER AND RESTORE WORK TO PROVIDE FOR ARCHITECT/ENGINEER OBSERVATION OF CONCEALED WORK.

PROTECT EXISTING STRUCTURES, FURNISHINGS, FINISHES, MECHANICAL SYSTEMS, AND ELECTRICAL SYSTEMS WHILE PERFORMING CUTTING, DRILLING, FITTING, AND PATCHING.

PATCH EXISTING SURFACES AND BUILDING COMPONENTS USING NEW MATERIALS THAT MATCH EXISTING MATERIALS. PATCHING SHALL BE PERFORMED BY EXPERIENCED INSTALLERS.

GENERAL DEMOLITION NOTES

1. THERE ARE EXISTING LIGHTING FIXTURES AND EXIT SIGNS CURRENTLY INSTALLED WHERE NEW FIXTURES AND SIGNS ARE SHOWN EXCEPT WHERE NOTED. REMOVE AND LEGALLY DISPOSE OF ALL EXISTING LIGHTING FIXTURES, EXIT SIGNS, AND ASSOCIATED BALLASTS AND LAMPS.
2. THE CONTRACTOR SHALL VISIT THE SITE/BUILDING TO FIELD VERIFY EXISTING CONDITIONS PRIOR TO BID AND SHALL INCLUDE ALL WORK REQUIRED FOR COMPLETE DEMOLITION IN HIS BID.

ELECTRICAL LEGEND

SYMBOL	DESCRIPTION
	LIGHTING FIXTURE; TYPE AND CIRCUIT NUMBER AS INDICATED. SEE THE LIGHTING FIXTURE SCHEDULE FOR ADDITIONAL SYMBOLS AND TYPES.
	SINGLE OR DOUBLE FACE EXIT SIGN, CEILING MOUNTED. PROVIDE DIRECTIONAL ARROWS/CHEVRONS AS INDICATED ON PLAN.
	SINGLE OR DOUBLE FACE EXIT SIGN, WALL MOUNTED. PROVIDE DIRECTIONAL ARROWS/CHEVRONS AS INDICATED ON PLAN.
	EXISTING PANELBOARD, SURFACE MOUNTED - TO REMAIN IN PLACE.
	EXISTING LIGHTING CONTACTOR - TO REMAIN IN PLACE.
	EXISTING 2'x4' RECESSED FLUORESCENT TROFFER - REMOVE.
	EXISTING 2'x4' RECESSED FLUORESCENT TROFFER WITH INTEGRAL EMERGENCY BATTERY PACK - REMOVE.
	EXISTING 4' VANITY FLUORESCENT WALL FIXTURE - REMOVE.
	EXISTING FLUORESCENT DOWNLIGHT - REMOVE.
	EXISTING WALL MOUNTED EXTERIOR LIGHTING FIXTURE - REMOVE.
	EXISTING CEILING MOUNTED EXIT SIGN - REMOVE.
	EXISTING WALL MOUNTED EXIT SIGN - REMOVE.
	EXISTING SINGLE-POLE LIGHT SWITCH OR LOW VOLTAGE LIGHT SWITCH - TO REMAIN IN PLACE.

ELECTRICAL DRAWING INDEX

E-1	GENERAL NOTES, LEGEND, AND SCHEDULES
E-2	FIRST FLOOR LIGHTING PLANS - BASE BID
E-3	FIRST FLOOR LIGHTING PLANS - ADD ALTERNATE 1
E-4	FIRST FLOOR LIGHTING PLANS - ADD ALTERNATE 2

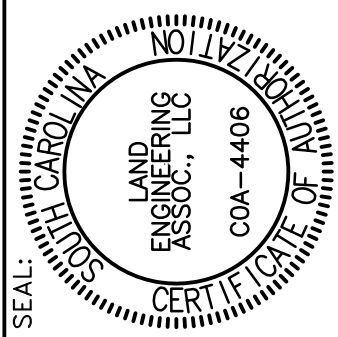


USC-2014-10



262 SANDHURST ROAD, SUITE 101
COLUMBIA, SOUTH CAROLINA
(803) 528-1437
Joe.Land.LEA@sc.rr.com

OFFICE OF
FACILITIES MANAGEMENT
COLUMBIA, SC 29208



SEAL:	CHECKED BY:	JWL	DRAWN BY:	
	ORIG. BY:		DATE:	

DATE:	09JUN15
DESCRIPTION	

BUILDING:	004
REV.	

DATE:	09JUN15
DESCRIPTION	

DATE:	09JUN15
DESCRIPTION	

DATE:	09JUN15
DESCRIPTION	

DATE:	09JUN15
DESCRIPTION	

DATE:	09JUN15
DESCRIPTION	

DATE:	09JUN15
DESCRIPTION	

DATE:	09JUN15
DESCRIPTION	

DATE:	09JUN15
DESCRIPTION	

DATE:	09JUN15
DESCRIPTION	

DATE:	09JUN15
DESCRIPTION	

DATE:	09JUN15
DESCRIPTION	

DATE:	09JUN15
DESCRIPTION	

DATE:	09JUN15
DESCRIPTION	

DATE:	09JUN15
DESCRIPTION	

DATE:	09JUN15
DESCRIPTION	

DATE:	09JUN15
DESCRIPTION	

DATE:	09JUN15
DESCRIPTION	

DATE:	09JUN15
DESCRIPTION	

DATE:	09JUN15
DESCRIPTION	

LIGHTING NOTES

1. EXISTING LIGHTING CIRCUITS INDICATED ON ARE SERVED FROM PANEL "LA" UNLESS NOTED OTHERWISE. CIRCUIT NUMBERS WERE COPIED FROM ORIGINAL CONSTRUCTION DRAWINGS - FIELD VERIFY PRIOR TO WORKING ON EXISTING CIRCUITS.
2. THE ORIGINAL DRAWINGS INDICATE THAT THE LIGHTING CIRCUITS WERE INSTALLED USING MULTI-WIRE CIRCUITS WITH A COMMON NEUTRAL, AND THE EXISTING CIRCUIT BREAKERS IN PANEL "LA" FOR THESE CIRCUITS DO NOT CURRENTLY HAVE TIE HANDLES INSTALLED FOR 3-POLE GROUPINGS. PROVIDE TIE HANDLE ACCESSORIES ON THE EXISTING SINGLE-POLE BREAKERS THAT SERVE THE MULTI-WIRE CIRCUITS IN PANEL "LA". THE CONTRACTOR MAY OPTIONALLY REPLACE SINGLE POLE BREAKERS WITH 3-POLE BREAKERS.
3. FOR LIGHTING FIXTURES REFERENCED TO THIS NOTE, NO FIXTURE IS CURRENTLY INSTALLED AT THIS LOCATION. PROVIDE NEW OR EXTEND EXISTING RACEWAYS AND WIRING AS REQUIRED TO SERVE NEW FIXTURES ON CIRCUIT INDICATED.
4. NOTE: PANELBOARD "EM" IS LOCATED IN AN EQUIPMENT ROOM ON THE LOWER LEVEL OF THE BUILDING (BELOW STAIR).
5. EXISTING LIGHTING CONTACTOR CURRENTLY CONTROLS LIGHTS IN THE LIBRARY VIA LOW VOLTAGE SWITCHES AND IS TO REMAIN IN PLACE.
6. THERE IS AN ONGOING SEPARATE CONTRACT TO RENOVATE THE CEILINGS AND FINISHES IN THE MEN'S AND WOMEN'S RESTROOMS. THIS CONTRACTOR SHALL COORDINATE LIGHTING REPLACEMENT IN THE RESTROOMS WITH THE GENERAL CONTRACTOR WHO IS RENOVATING THE RESTROOMS TO ENSURE A SMOOTH FLOW OF WORK AND TO NOT CAUSE DELAYS IN THE WORK OF EITHER CONTRACT.

1. EXISTING LIGHTING CIRCUITS INDICATED ON ARE SERVED FROM PANEL "LA" UNLESS NOTED OTHERWISE. CIRCUIT NUMBERS WERE COPIED FROM ORIGINAL CONSTRUCTION DRAWINGS - FIELD VERIFY PRIOR TO WORKING ON EXISTING CIRCUITS.
2. THE ORIGINAL DRAWINGS INDICATE THAT THE LIGHTING CIRCUITS WERE INSTALLED USING MULTI-WIRE CIRCUITS WITH A COMMON NEUTRAL, AND THE EXISTING CIRCUIT BREAKERS IN PANEL "LA" FOR THESE CIRCUITS DO NOT CURRENTLY HAVE TIE HANDLES INSTALLED FOR 3-POLE GROUPINGS. PROVIDE TIE HANDLE ACCESSORIES ON THE EXISTING SINGLE POLE BREAKERS THAT SERVE THE MULTI-WIRE CIRCUITS IN PANEL "LA". THE CONTRACTOR MAY OPTIONALLY REPLACE SINGLE POLE BREAKERS WITH 3-POLE BREAKERS.
3. FOR LIGHTING FIXTURES REFERENCED TO THIS NOTE, NO FIXTURE IS CURRENTLY INSTALLED AT THIS LOCATION. PROVIDE NEW OR EXTEND EXISTING RACEWAYS AND WIRING AS REQUIRED TO SERVE NEW FIXTURES ON CIRCUIT INDICATED.
4. NOTE: PANELBOARD "EM" IS LOCATED IN AN EQUIPMENT ROOM ON THE LOWER LEVEL OF THE BUILDING (BELOW STAIR).
5. EXISTING LIGHTING CONTACTOR CURRENTLY CONTROLS LIGHTS IN THE LIBRARY VIA LOW VOLTAGE SWITCHES AND IS TO REMAIN IN PLACE.
6. THERE IS AN ONGOING SEPARATE CONTRACT TO RENOVATE THE CEILINGS AND FINISHES IN THE MEN'S AND WOMEN'S RESTROOMS. THIS CONTRACTOR SHALL COORDINATE LIGHTING REPLACEMENT IN THE RESTROOMS WITH THE GENERAL CONTRACTOR WHO IS RENOVATING THE RESTROOMS TO ENSURE A SMOOTH FLOW OF WORK AND TO NOT CAUSE DELAYS IN THE WORK OF EITHER CONTRACT.



NOT TO SCALE



1/8" = 1'-0"

4 0 4 8 16

scale feet

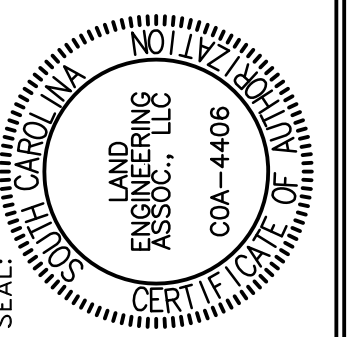


USC-2014-10



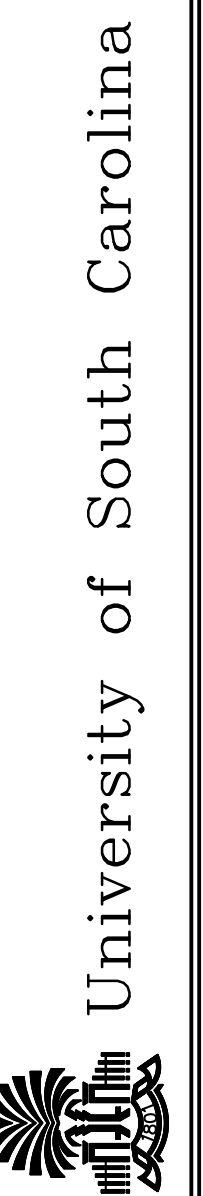
262 SANDHURST ROAD, SUITE 101
COLUMBIA, SOUTH CAROLINA
(803) 528-1437
Joe.Land.LEA@sc.rr.com

OFFICE OF
FACILITIES MANAGEMENT
COLUMBIA, SC 29208

[illegible]

PROJECT TITLE:

USCL MEDFORD FIRST FLOOR LIGHTING RENOVATIONS



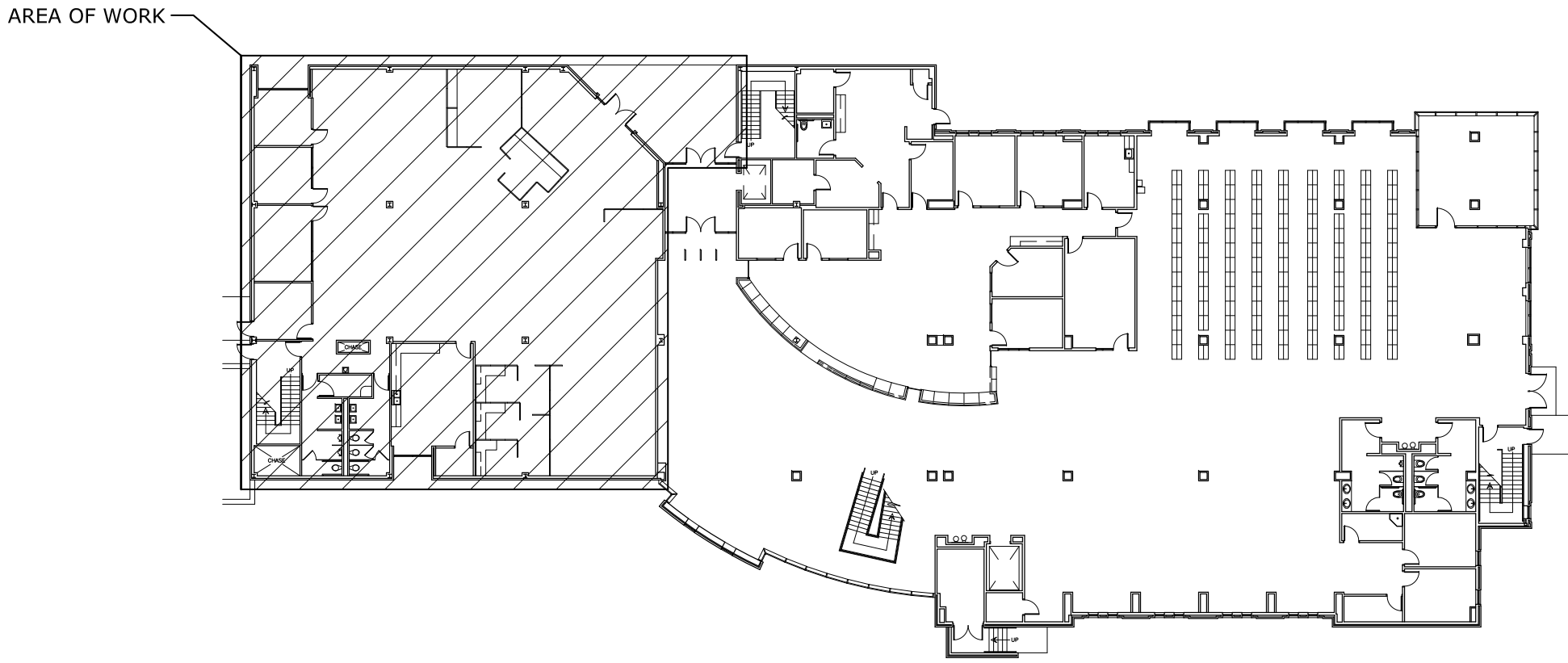
SHEET: **E-2**
2 OF 4

SHEET IN SET:
2 OF 4

LIGHTING NOTES

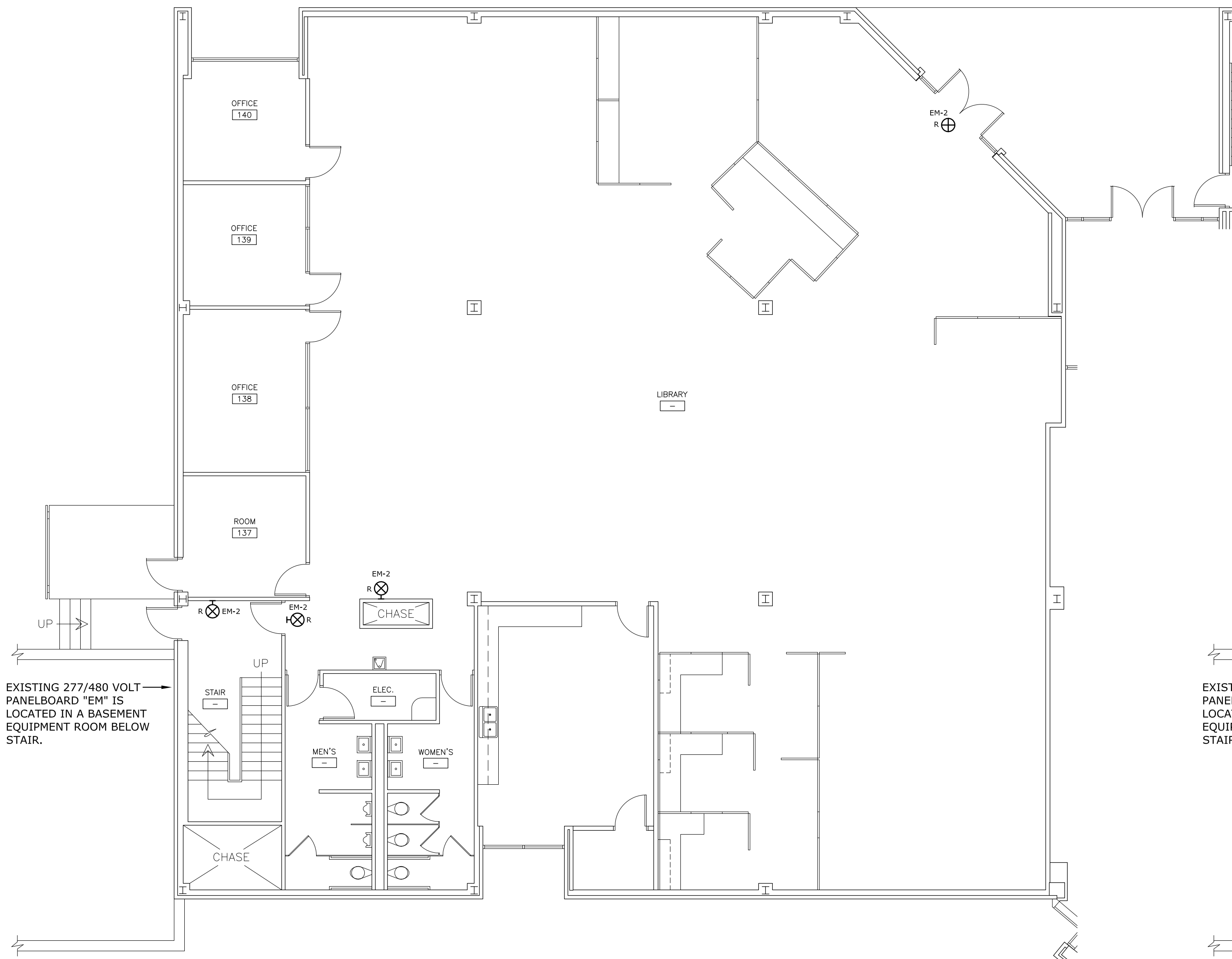
1. EXISTING EXIT SIGN CIRCUITS INDICATED ON PLAN ARE SERVED FROM PANEL "EM" UNLESS NOTED OTHERWISE. CIRCUIT NUMBERS WERE COPIED FROM ORIGINAL CONSTRUCTION DRAWINGS - FIELD VERIFY PRIOR TO WORKING ON EXISTING CIRCUITS.

2. FOR EXIT SIGNS REFERENCED TO THIS NOTE, NO EXIT SIGN IS CURRENTLY INSTALLED AT THIS LOCATION. PROVIDE NEW OR EXTEND EXISTING RACEWAYS AND WIRING AS REQUIRED TO SERVE NEW EXIT SIGN.



KEY PLAN - FIRST FLOOR

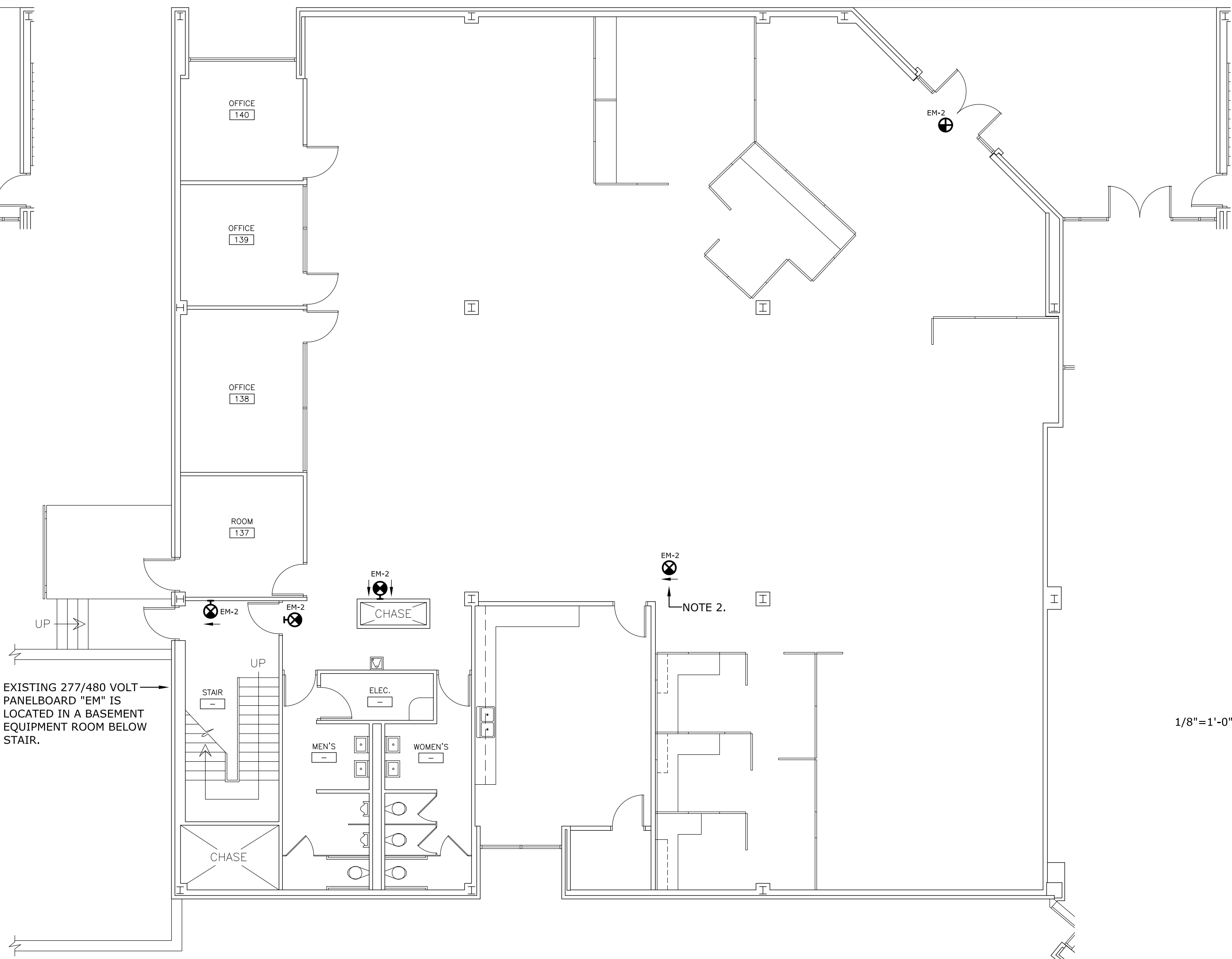
NOT TO SCALE



1 LIGHTING DEMOLITION PLAN - FIRST FLOOR

SCALE: 1/8" = 1'-0"

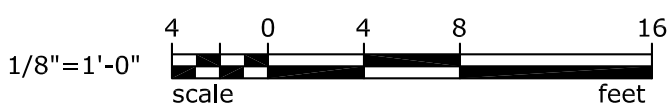
ADD ALTERNATE 1



2 LIGHTING RENOVATION PLAN - FIRST FLOOR

SCALE: 1/8" = 1'-0"

ADD ALTERNATE 1



LEA LAND
ENGINEERING
ASSOCIATES, LLC

262 SANDHURST ROAD, SUITE 101
COLUMBIA, SOUTH CAROLINA
(803) 528-1437
Joe.Land.LEA@sc.rr.com

OFFICE OF
FACILITIES MANAGEMENT
COLUMBIA, SC 29208

SEAL: LAND ENGINEERING ASSOCIATES, LLC COA-44406

CHECKED BY: JWL
ORIG. BY: JWL
DATE: 09JUN15

DRAWN BY: JSJ
DATE: 09JUN15

BUILDING: 004
REV. 1

DESCRIPTION

PROJECT TITLE: USCL MEDFORD FIRST FLOOR
LIGHTING RENOVATIONS

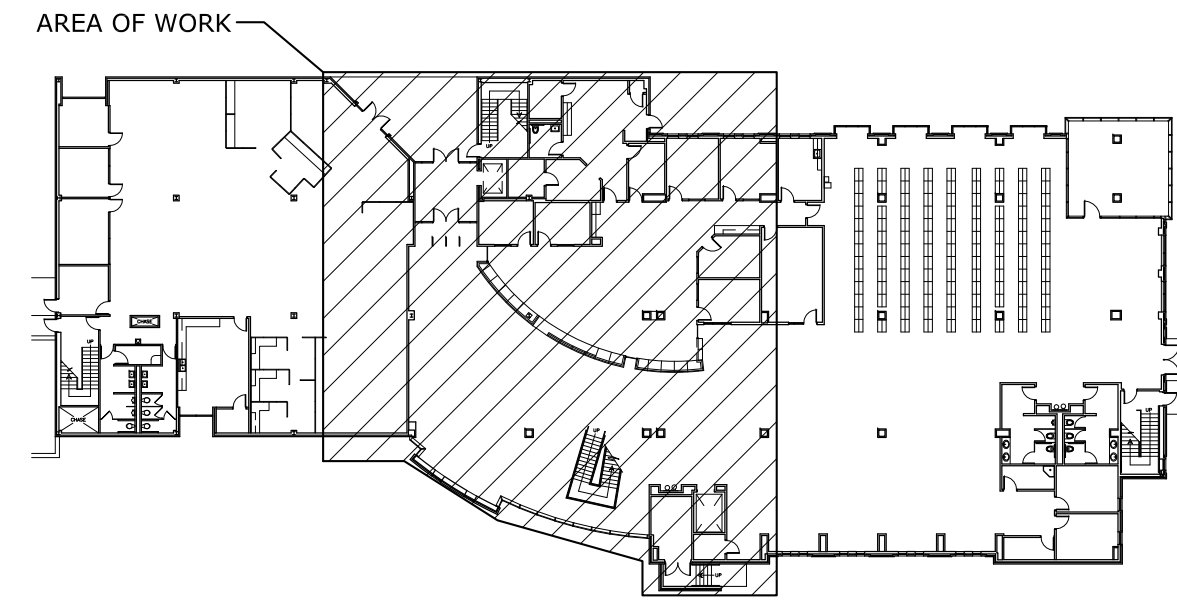
University of South Carolina

SHEET:
E-3
3 OF 4

SHEET IN SET:
3 OF 4

LIGHTING NOTES

- EXISTING LIGHTING CIRCUITS INDICATED ON PLAN ARE SERVED FROM PANEL "LC" UNLESS NOTED OTHERWISE. CIRCUIT NUMBERS WERE COPIED FROM ORIGINAL CONSTRUCTION DRAWINGS - FIELD VERIFY PRIOR TO WORKING ON EXISTING CIRCUITS.
- A #12 AWG, THHN, COPPER, NON-SWITCHED PHASE CONDUCTOR AND A #12 AWG GREEN INSULATED COPPER GROUND WIRE SHALL BE PROVIDED FROM PANEL "LC" (CIRCUIT 5) TO ALL TYPE "DE" LIGHTING FIXTURES WITH INTEGRAL OR REMOTE BATTERY PACKS (FOR CHARGING AND FOR CIRCUIT LOSS DETECTION). RACEWAY FOR CONDUCTORS SHALL BE 3/4" EMT WITH COMPRESSION FITTINGS AND SHALL BE CONCEALED ABOVE EXISTING CEILINGS.
- FOR TYPE "DE" FIXTURES, FLUSH MOUNT REMOTE TEST SWITCHES FOR BATTERY PACKS IN ACOUSTICAL DROP CEILINGS AT LOCATIONS INDICATED ON PLAN. PROVIDE RACEWAY, CONDUCTORS, JUNCTION BOXES, AND BACKBOXES AS REQUIRED TO MOUNT AND TIE THE BATTERY PACKS AND SWITCHES TOGETHER. SUPPORT ALL BOXES IN ACCORDANCE WITH THE NATIONAL ELECTRICAL CODE.
- NEATLY CUT CEILING OPENINGS OF EXISTING LIGHTING FIXTURES AS REQUIRED TO ACCOMMODATE MOUNTING OF NEW LIGHTING FIXTURES (NEW FIXTURES HAVE A LARGER APERTURE/DIAMETER THAN THE EXISTING LIGHTING FIXTURES).

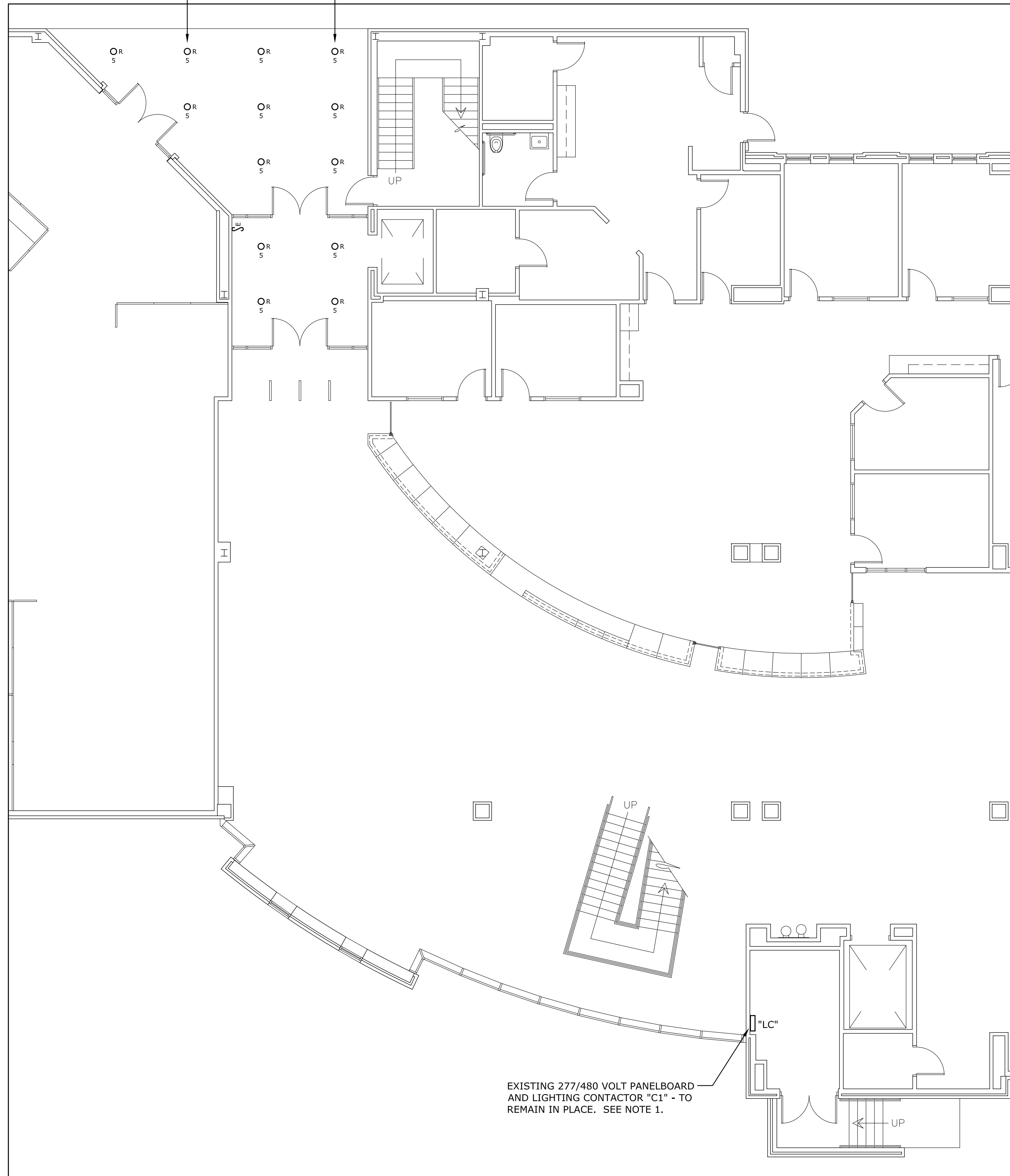


KEY PLAN - FIRST FLOOR

NOT TO SCALE

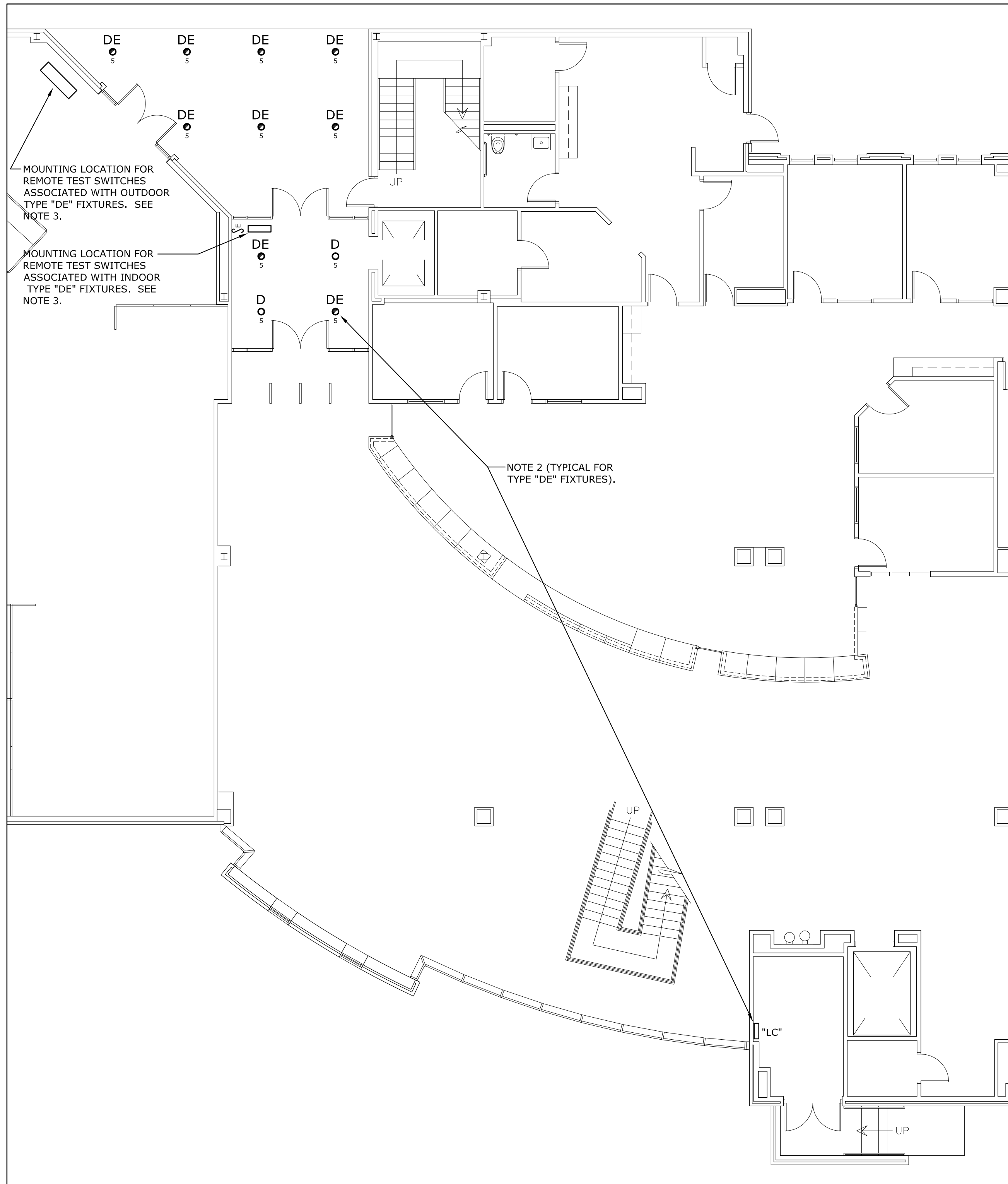
SEE NOTE 4 (TYPICAL FOR EXISTING DOWNLIGHTS).

EXISTING DOWNLIGHTS ARE CONTROLLED BY EXISTING LIGHTING CONTACTOR "C1" (LOCATED ADJACENT TO PANEL "LC").



EXISTING 277/480 VOLT PANELBOARD AND LIGHTING CONTACTOR "C1" - TO REMAIN IN PLACE. SEE NOTE 1.

1 LIGHTING DEMOLITION PLAN - FIRST FLOOR
SCALE: 1/8" = 1'-0"
ADD ALTERNATE 2



MOUNTING LOCATION FOR REMOTE TEST SWITCHES ASSOCIATED WITH OUTDOOR TYPE "DE" FIXTURES. SEE NOTE 3.

MOUNTING LOCATION FOR REMOTE TEST SWITCHES ASSOCIATED WITH INDOOR TYPE "DE" FIXTURES. SEE NOTE 3.

NOTE 2 (TYPICAL FOR TYPE "DE" FIXTURES).

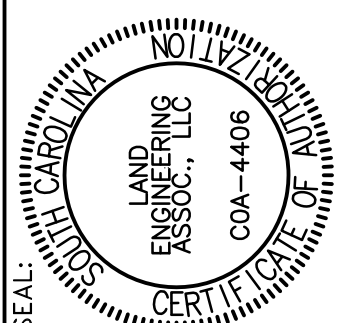
2 LIGHTING RENOVATION PLAN - FIRST FLOOR
SCALE: 1/8" = 1'-0"
ADD ALTERNATE 2

1/8"=1'-0"
scale



LEA LAND ENGINEERING ASSOCIATES, LLC
262 SANDHURST ROAD, SUITE 101
COLUMBIA, SOUTH CAROLINA
(803) 528-1437
Joe.Land.LEA@sc.rr.com

OFFICE OF
FACILITIES MANAGEMENT
COLUMBIA, SC 29208



BUILDING:	DRAWING:	DATE:	CHECKED BY:	DATE:	ORIG. BY:	DATE:
004	004	09JUN15	JWL	09JUN15	JWL	09JUN15
REV.	DESCRIPTION	DATE	DATE	DATE	DATE	DATE

USCL MEDFORD FIRST FLOOR
LIGHTING RENOVATIONS
University of South Carolina

SHEET:
E-4
4 OF 4
SHEET IN SET:
4 OF 4